



International  
Waste Industries



# Corporate Philosophy

## Mission Statement

IWI is an experienced and innovative company committed to developing the highest quality, efficient, cost effective, and competitively priced systems devoted to meeting or exceeding the most stringent air quality and environmental regulations worldwide. We aim to become a globally recognized brand, capitalizing on human and environmental needs. Our goal is to do right by our clients, do right by our employees, and most importantly do right by the environment.

## Vision Statement

We are committed to being part of the solution to humanity's effect on the environment: ***Protecting the environment while powering our future!***



# Company Profile

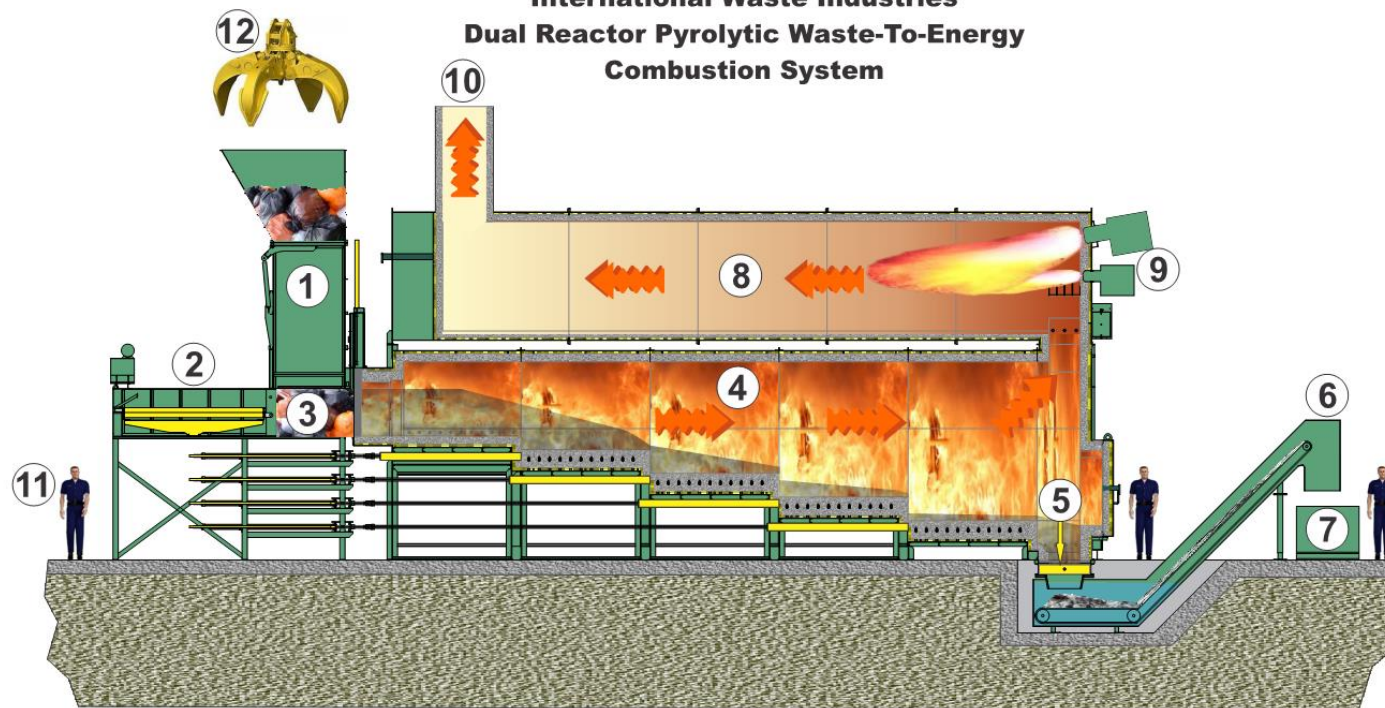
**International Waste Industries (IWI)** was **established in 1979** and has a **proven track record** in the industry for **40 years** with over **700 installations worldwide**. IWI is a **full service** designer, **manufacturer**, and **systems integrator** of waste combustion and **waste-to-energy (WtE) systems**. IWI designed, manufactured, and installed its first WtE system in 1984. Our **strength** is our **experience**, and our **commitment** to high **quality** standards, health and **safety** policies, and **ethical** business practices, as well as our drive towards **excellence** in engineering, manufacturing, and **innovation**.

Our specialty is **Dual Reactor Pyrolytic Thermal Combustion Systems**. These systems can include complete waste handling, ash removal, and air pollution control equipment, as well as continuous emissions monitoring and recording equipment, waste heat recovery boiler equipment and steam turbine generators to produce electricity.

Our services include design and engineering, installation, commissioning, startup, and training of the clients' staff in operations and maintenance of the system, as well as troubleshooting and repair of the equipment. We also provide full operation and maintenance contract services.



**International Waste Industries**  
**Dual Reactor Pyrolytic Waste-To-Energy**  
**Combustion System**



- |                    |                               |                     |                   |
|--------------------|-------------------------------|---------------------|-------------------|
| ① Feed Hopper      | ④ Primary Chamber             | ⑦ Ash Cart          | ⑩ Emergency Stack |
| ② Automatic Loader | ⑤ Guillotine Door Ash Gate    | ⑧ Secondary Chamber | ⑪ Man, 6ft / 1.8m |
| ③ Solid Waste      | ⑥ Wet Ash Drag Chain Conveyor | ⑨ Ignition Burners  | ⑫ Grapple         |

## Committed To Excellence

All IWI equipment is designed and manufactured in the USA. Our systems are modular and factory built to keep installation simple and economical. All piping and wiring is completed at the factory, thus simplifying utility connections to single point hook-up. All systems are tested to the fullest extent possible prior to shipment, assuring a minimum amount of time for start-up.

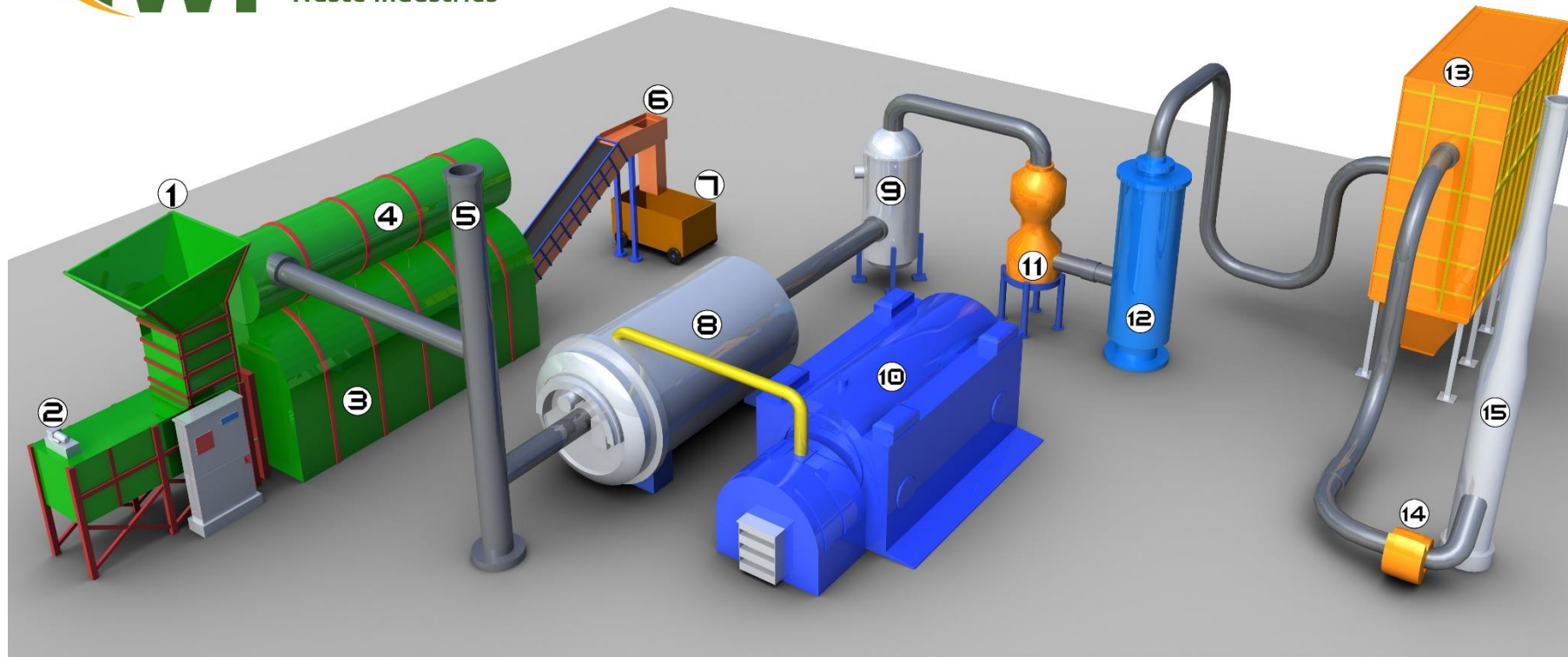


# Powering the Future



International  
Waste Industries

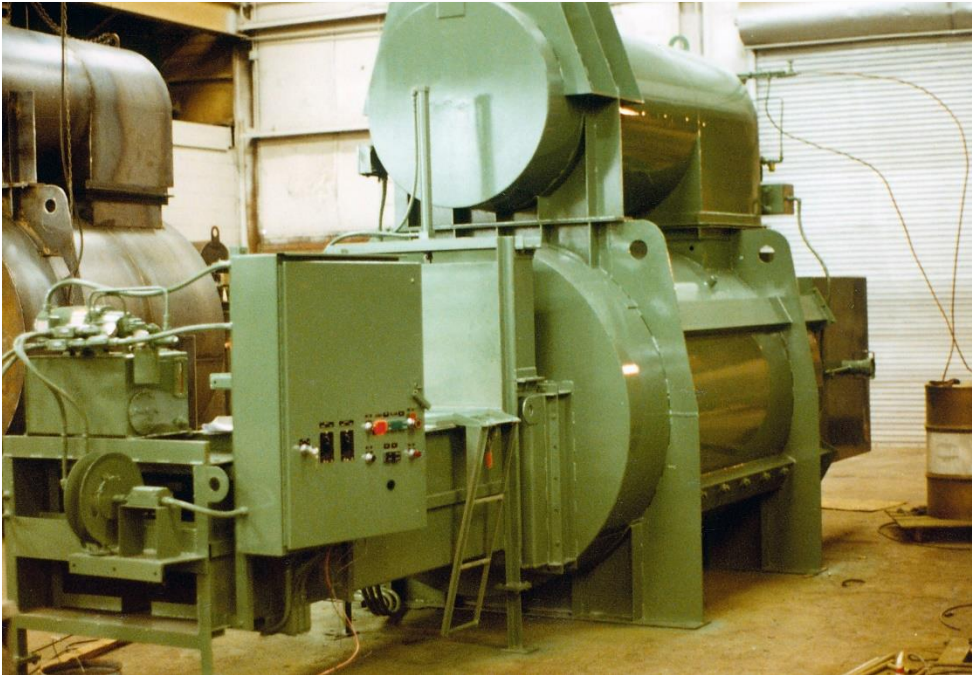
## Dual Reactor Waste-To-Energy Thermal Combustion System



- |                    |                               |                     |   |                       |
|--------------------|-------------------------------|---------------------|---|-----------------------|
| ① Feed Hopper      | ④ Secondary Chamber           | ⑦ Ash Cart          | ⑩ High Pressure Steam Turbine And Generator | ⑬ Dry Baghouse Filter |
| ② Automatic Loader | ⑤ Emergency Bypass            | ⑧ Waste Heat Boiler | ⑪ Venturi Scrubber                          | ⑭ I.D. Fan            |
| ③ Primary Chamber  | ⑥ Wet Ash Drag Chain Conveyor | ⑨ Economizer        | ⑫ Packed Tower                              | ⑮ Conditioned Exhaust |

# IWI's Medical Waste Incinerator

- ▶ In 1997 IWI installed 2 Controlled Air Pyrolytic Incinerators (side by side) for medical waste and after 19 years they are still operating successfully and complies with today's US EPA and EU emission standards
- ▶ In 1984 IWI installed a medical waste Incinerator for a hospital in New York City that also produced steam for the hospital becoming IWI's first Waste to Energy System



- ▶ IWI's dual reactor incineration systems are suitable for treating a range of biomedical and pharmaceutical waste products, including:
  - Pathological waste
  - Laboratory and microbiology waste
  - Blood and bodily fluids
  - Human and animal tissues
  - Expired and off-spec pharmaceutical drugs
  - Patient contact wastes
  - Waste sharps
- ▶ The types of medical waste that can be incinerated include:
  - Infectious waste from hospitals
  - Infectious, "red bag" waste (also called biohazardous)
  - Health care waste from hospitals, clinics, and polyclinics
  - Surgery waste
  - Biomedical and Pathological waste
  - Pharmaceutical waste
  - Low Radioactive Waste



# Solid Waste Treatment Plant

## IWI's Latest Installation



- ▶ Hamad International Airport formerly known as NDIA (New Doha International Airport)
- ▶ Designed to process all waste (food, paper, and plastics) from airport facility and passenger aircraft.
- ▶ Each Incinerator Package is designed and fully automated to handle 25,700 kg/day of 50% moisture waste, 24 hrs/day, 365 days/year

- ▶ **Exceeds all US EPA and EU Air Pollution Control Regulations**
- ▶ 3 parallel systems, 2 running & 1 on standby, but all 3 can run simultaneously
- ▶ Each Incineration Package includes a Waste Conveyor with solid waste hopper, 1 Ram Feeder with hydraulic power, 1 Fixed Hearth Dual Reactor Pyrolysis Incinerator, 1 Ash Conveyor, complete Air Pollution Control (APC) Equipment and Continuous Emissions Monitoring System (CEMS)



# Abu Dhabi - Outdoor Incinerator



- ▶ Located on Mubarratz Island
- ▶ 400 lbs/hr of general waste
- ▶ Secondary chamber 2 second retention at 1,800°F
- ▶ Designed to handle extreme weather conditions
  - ▶ High heat from constant exposure to sun over 55 degC
  - ▶ High winds with high salt content from the ocean



# Portfolio



*HMI (Human Machine Interface) Control Room Panel*



*Evaporative Cooler with Dry Bag House  
Scrubber & Stack*



# Portfolio



*Outdoor Dual Reactor Combustion System at Jeddah Port Authority*



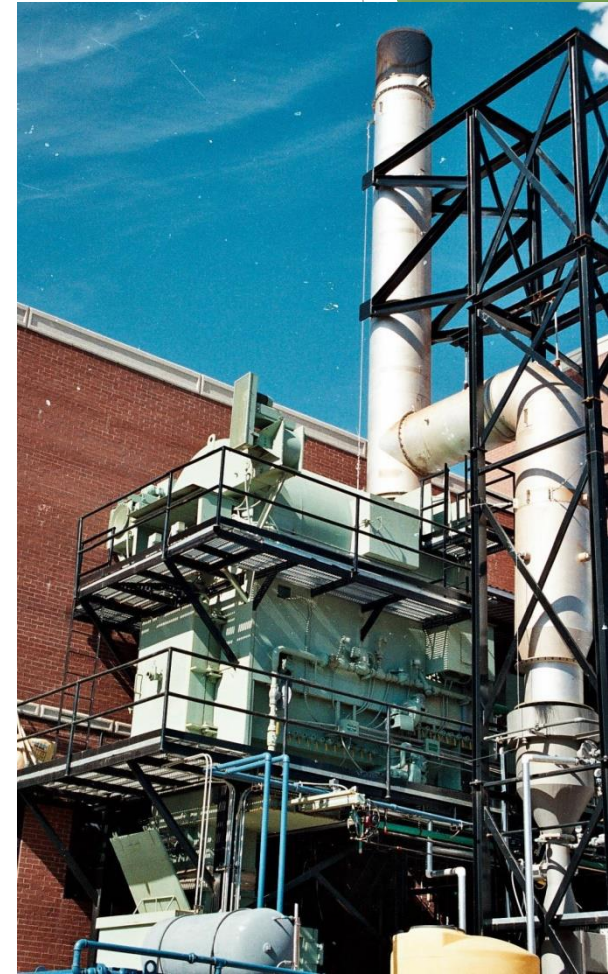
*Municipal Solid Waste (MSW) Waste-to-Energy (WTE) Treatment Plant - Russia*



*Pharmaceutical Waste Treatment System with Heat Recovery and Automatic Ash Removal*



*Multiple Modular Dual Reactor Waste Combustion Systems*



*Medical Waste Treatment Plant*



## Corporate Headquarters

Main: +1 301-975-0050

Fax: +1 301-975-0060

Email: [info@IWIsystems.com](mailto:info@IWIsystems.com)

7811 Montrose Rd, Suite 250  
Potomac, MD 20854  
United States



[www.IWIsystems.com](http://www.IWIsystems.com)